



A passion for water  
[www.herbosch-kiere.com](http://www.herbosch-kiere.com)

 EIFFAGE  
**HERBOSCH-KIERE**

# Herbosch-Kiere, innovation and expertise in maritime construction

For over a century, Herbosch-Kiere has been a leader in marine, harbor, river, and offshore construction. Despite our extensive experience, we recognize the need for continuous learning and invest in our people and equipment to stay ahead.

With a proactive and innovative team, we tackle complex challenges and deliver safe, cost-effective, and tailor-made solutions. Our dedicated quay and workshop in the Port of Antwerp serve as a key base for global projects. Together with our UK subsidiary and partners SCALDIS and CTOW, we execute a wide range of maritime projects with safety and value creation at the core.



## The Eiffage Group

Herbosch-Kiere is part of Eiffage Construction Belux, within the Eiffage Group, a leading European contractor. Eiffage operates globally, specializing in construction, real estate, civil engineering, roadworks, energy, and concessions. With 64,000 employees and 100,000 projects annually, its culture of innovation and expertise ensures high-quality results. Our parent company's financial stability provides strong support for us and our clients.

Herbosch-Kiere prioritizes safety, quality, and environmental responsibility through an integrated SHEQ management system, rigorous training, and continuous improvement. With strong leadership commitment, we pursue a zero-incident strategy and industry-leading performance. Our certified management system includes VCA\*\*, ISO 9001, ISO 14001, and CO2 Awareness Level 4. We ensure a safe working environment, deliver superior quality on time and within budget, and actively promote sustainability and resource conservation.

**Committed to Safety,  
Quality, and Sustainability**

# Our core activities to support the offshore wind energy sector

## SHALLOW WATER CABLE LAYING



Cable layer CMOS-INSTALLER for the installation of two submarine power cables in Dakar, Senegal.

## HEAVY LIFTING



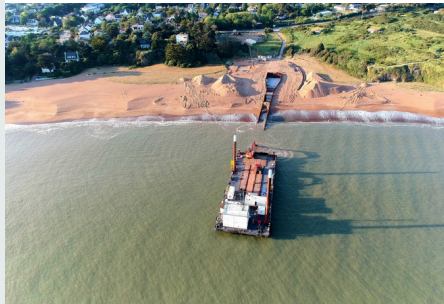
HERBOSCH-KIERE and ETMF replacing one 220-ton Quinette lock gate per year in Le Havre using ATLANTIS, GAVERLAND, and WAASLAND.

## NEARSHORE TRENCHING AND DREDGING



Barge WAASLAND executed dredging works in Dunkirk, France, using the split hopper barge OTTER.

## CABLE PULL-IN



Barge GAVERLAND dredged a 750m trench and assisted in installing high-voltage cables at the Saint-Nazaire wind farm.

## ROCK INSTALLATION



ALBATROS and GAVERLAND placing rocks for the renovation of a breakwater in Klaipeda, Lithuania.

## DECOMMISSIONING & SALVAGE WORKS



Demolition of the Royal Sovereign Lighthouse off the coast of Eastbourne with the vessel RAMBIZ from SCALDIS.

## CHARTER SERVICES



Installation of submarine cable in Bahrain waters with our multipurpose vessel ATLANTIS.

Tel: +32 (0)3 575 02 8  
info.hk@eiffage.com  
[www.herbosch-kiere.com](http://www.herbosch-kiere.com)



Building the  
infrastructure of  
today and tomorrow.  
In, over and close to  
water.

**Herbosch-Kiere NV**

Haven 1558 - Sint-Jansweg 7  
9130 Kallo | Belgium

Tel: +32 (0)3 575 02 8

Fax: +32 (0)3 575 13 1

[info.hk@eiffage.com](mailto:info.hk@eiffage.com)

[www.herbosch-kiere.com](http://www.herbosch-kiere.com)